

K Series to EK Series Comparison

	K Series	EK Series
Fin Pack	Same	Same
Heat Rejection	Same	Same
Pressure Drop - oil	Same	Same
Shell	Steel	Steel
End Bonnet	Cast Iron	Cast Iron
End Hubs	Cast Iron	N/A
Tube Sheet	N/A	Steel
Mounting Brackets	Steel	Steel
Tubes	Copper	Copper
Baffles	Steel	Steel
Fins	Aluminum	Aluminum
Gaskets	Nitrile rubber/cellulose fiber	Nitrile rubber/cellulose fiber

Note: K and EK Series are available with copper or copper nickel tubes.

Dimensional Comparison

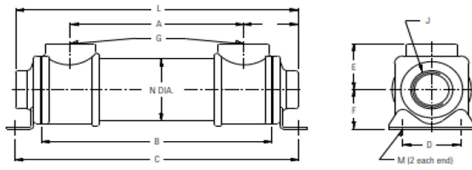
K Series												
Size	Piping CTC		Mounting CTC		Tube Ctr to Mounting E	Tube Ctr to Shell Conn Ctr (Vertical) F	Tube Ctr to Shell Conn Ctr (Horizontal) G	Overall H	Shell Side Ports J		Tube Side Ports K	
	Shell A	Tube (2 Pass) B	Length C	Width D					NPT	SAE	1 Pass	2 Pass
508	5.75	1.12	10.25	2.5"	1.62"	1.88"	2.22"	10.19	3/4"	#12	3/8"	3/4"
512	9.75	1.12	14.25					14.19				
514	11.75	1.12	16.25					16.19				
518	15.75	1.12	20.25					20.19				
708	5.00	2.00	10.75	3"	2.25"	2.62"	2.87"	10.69	1 1/2"	#24	1 1/4"	1"
712	9.00	2.00	14.75					14.69				
714	11.00	2.00	16.75					16.69				
718	15.00	2.00	20.75					20.69				
1012	8.50	2.38	15.50	4"	4"	3.50"	4.31"	17.12	2"	#32	2"	1 1/2"
1014	10.50	2.38	17.50					19.12				
1018	14.50	2.38	21.50					23.13				
1024	20.50	2.38	27.50					29.12				

EK Series																						
Size	Piping CTC		Mounting CTC		Tube Ctr to Mounting E	Tube Ctr to Shell Conn Ctr - Vertical (dif) F	Tube Ctr to Shell Conn Ctr (Horizontal) (1 Pass) G	Tube Ctr to Shell Conn Ctr (Horizontal) (2 Pass) G	Overall (dif) H	Shell Side Ports J		Tube Side Ports K										
	Shell (dif) A	Tube (dif) 2 Pass B	Length (dif) C	Width D						NPT	SAE	1 Pass	2 Pass									
505	2.19	1.12	7.44	2.5"	1.62"	2.28" (+0.4")	3.26"	(±1.04")	7.37	1/2"	#8	3/8"	3/4"									
508	3.85 (-1.9)	1.12	10.44 (0.19)						10.37 (0.18)													
510	5.85	1.12	12.44						12.37													
512	7.85 (-1.9)	1.12	14.44 (0.19)						14.37 (0.18)													
514	9.85 (-1.9)	1.12	16.44 (0.19)						16.37 (0.18)													
518	13.85 (-1.9)	1.12	20.44 (0.19)						20.37 (0.18)													
524	19.85	1.12	26.44						26.37													
536	31.85	1.12	38.44						38.37													
708	3.00 (-2)	1.62 (-0.38)	10.39 (-0.36)						3"					2.59"	2.88"	4.07"	3.57"	11.13 (0.44)	1 1/2"	#24	1 1/4"	3/4" (-1/4")
712	7.00 (-2)	1.62 (-0.38)	14.39 (-0.36)															15.13 (0.44)				
714	9.00 (-2)	1.62 (-0.38)	16.39 (-0.36)	17.13 (0.44)																		
718	13.00 (-2)	1.62 (-0.38)	20.39 (-0.36)	21.13 (0.44)																		
724	19.00	1.62	26.36	27.13																		
736	31.00	1.62	38.39	39.13																		
1012	6.18 (-2.32)	2.38	15.46 (-0.04)	4"	4"	3.65"	4.57"	4.45"		15.32 (-1.8)	2"	NA	1 1/2"					1" (-1/2")				
1014	8.18 (-2.32)	2.38	17.46 (-0.04)							17.32 (-1.8)												
1018	12.18 (-2.32)	2.38	21.46 (-0.04)							21.32 (-1.8)												
1024	18.18 (-2.32)	2.38	27.46 (-0.04)							27.32 (-1.8)												
1036	30.18	2.38	39.46						39.32													
1048	42.18	2.38	51.46						51.32													

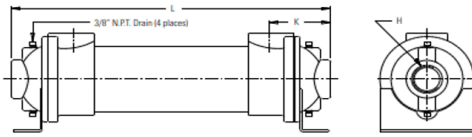
Reference Images

K Series

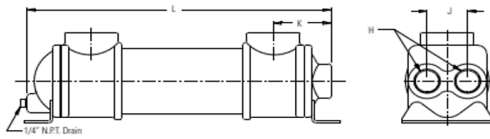
One Pass
K-500 &
K-700 Series



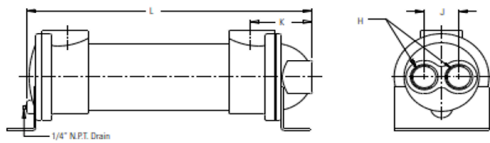
K-1000 Series



Two Pass
K-700 Series

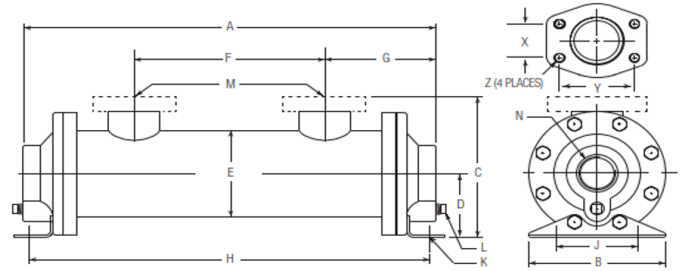


K-1000 Series

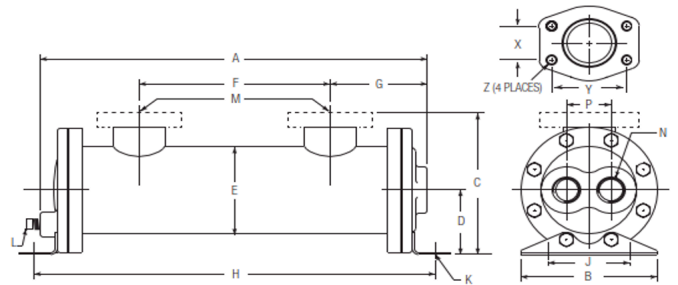


EK Series

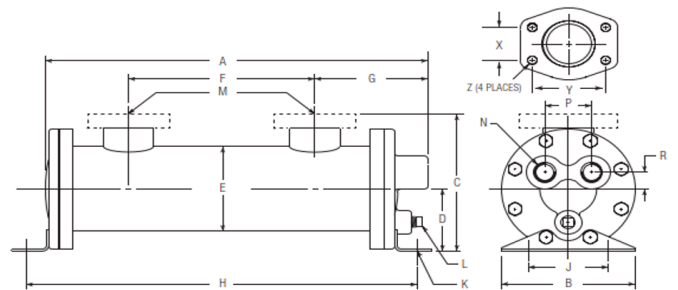
One Pass



Two Pass

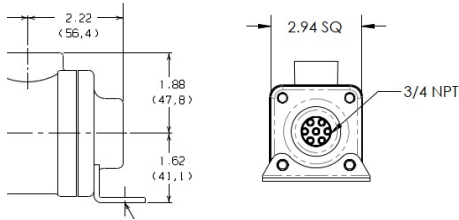


Four Pass

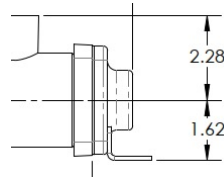


Bonnet Comparison

K-500-O

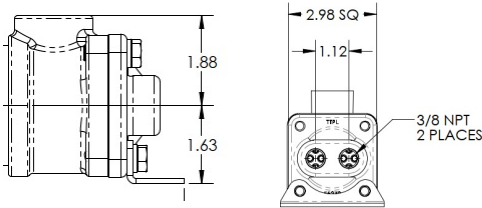


EK-500-O

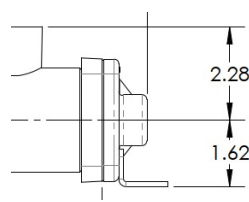


Same Bonnet as K

K-500-T

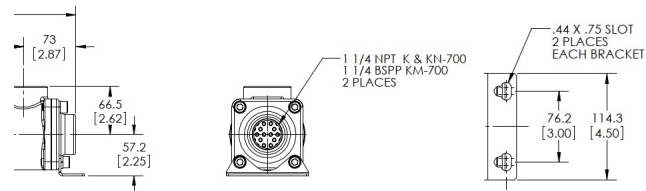


EK-500-T

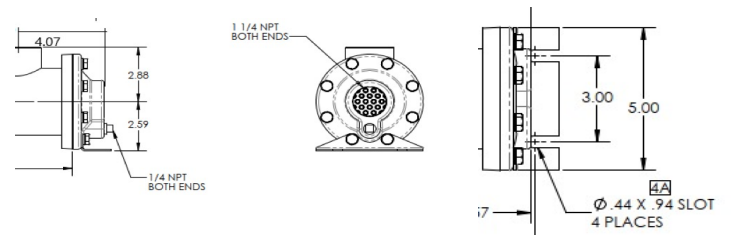


Same Bonnet as K

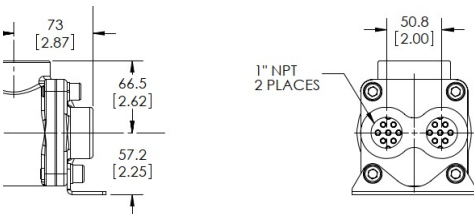
K-700-O



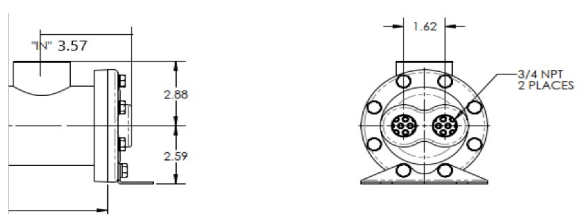
EK-700-O



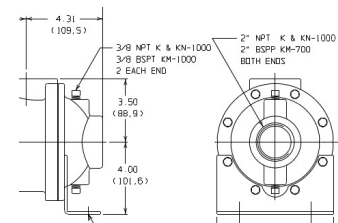
K-700-T



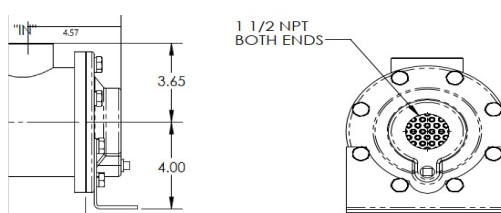
EK-700-T



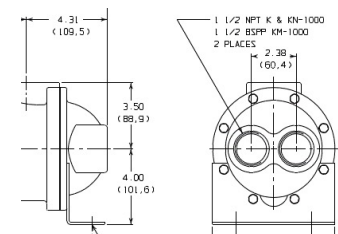
K-1000-O



EK-1000-O



K-1000-T



EK-1000-T

